

ATA AIRLINES, INC.

ELEVATOR HINGES AND ACTUATORS, INBOARD AND OUTBOARD

PAGE 1 / 2

CHECK BEING PERFORMED: Custom

ZONES: 334 335 336 344 W/C NUMBER: 733L2701 DATE:
A/C NUMBER:
REV. DATE: 06/07/07
FREQUENCY: PCI

MFR P/N	DESCRIPTION	QTY
MIL-G-81322	Wide temperature grease (WTR)	A/R

TOOLS	DESCRIPTION	QTY
Common	Grease Gun	1

PANELS

334AB	334CB	334EB	334GB	334JB	334UB	344BB
344DB	344FB	344HB	344KB			
334BB	334DB	334FB	334HB	334KB	344AB	344CB
344EB	344GB	344JB	344UB			

REFERENCES

Figure 1

MECH INSP

MRB Items: 27-31-00-04, 27-33-00-02

ELEVATOR HINGES AND ACTUATORS LUBRICATION, I/B AND O/B

Additional Zones: 345, 346

Procedure

1. Open the access doors that follow:

_____ XXXXX A. LH elevator: 334AB, 334BB, 334CB, 334DB, 334EB, 334FB, 334GB, 334HB, 334JB, 334KB, 334UB.

_____ XXXXX B. RH elevator: 344AB, 344BB, 344CB, 344DB, 344EB, 344FB, 344GB, 344HB, 344JB, 344KB, 344UB.

2. Lubricate the items in the following table (Reference also Figure 1):

_____ XXXXX A. RH Elevator

_____ XXXXX B. LH Elevator

Item No.	Item Description	Lube Type	Application	Number of Fitting or Areas
1	Elevator Actuators	WTR	Gun	10

REVISION DATE: 06/07/07

ATA AIRLINES, INC. DC10-30 FLEET

W/C #: 733L2701

DATE WORK CARD COMPLETE ___/___/___

A/C NUMBER:

CHECK BEING PERFORMED: Cust

W/C NUMBER: 733L2701 (continued)

MECH: INSP:

2	Hinge Eyebolts	WTR	Gun	27	
_____	_____	_____	_____	_____	

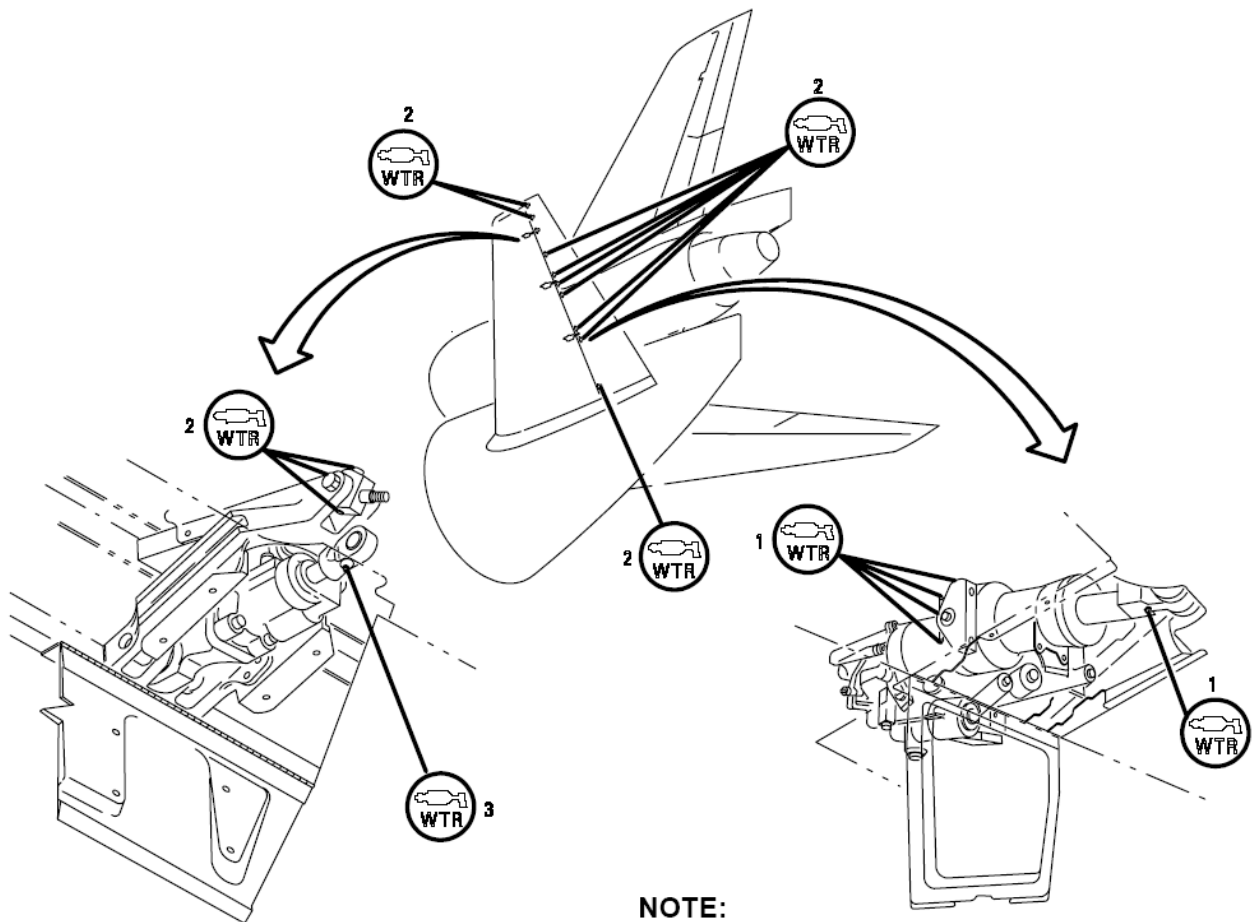
WTR: Wide Temperature Grease; MIL-G-81322

3. Close the access doors that follow:

_____ XXXXX A. RH elevator: 344AB, 344BB, 344CB, 344DB, 344EB, 344FB,
344GB, 344HB, 344JB, 344KB, 344UB.

_____ XXXXX B. LH elevator: 334AB, 334BB, 334CB, 334DB, 334EB, 334FB,
334GB, 334HB, 334JB, 334KB, 334UB.

***** END OF WORKCARD *****



NOTE:
LEFT SIDE SHOWN
RIGHT SIDE OPPOSITE

W3003600

Elevator Lubrication

Figure 1